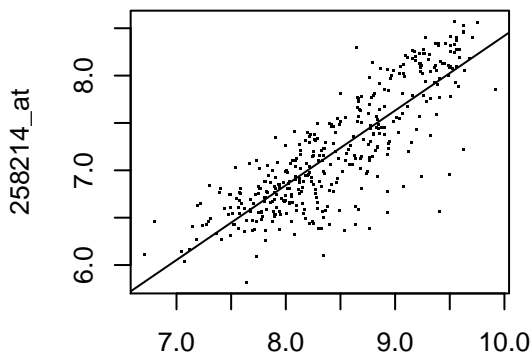
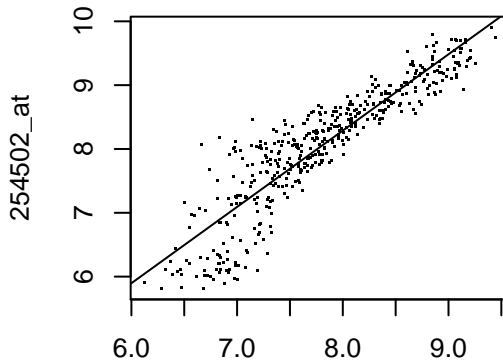


### AT3G17970



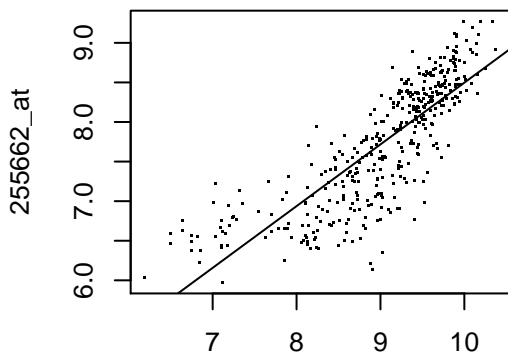
(R2= 0.7 , p= 9.2e-104 , cor.coef= 0.84 )

### AT4G20130



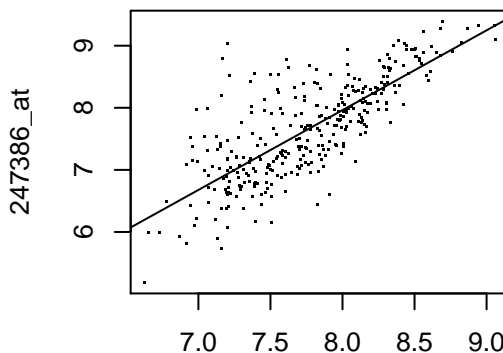
(R2= 0.82 , p= 1.4e-167 , cor.coef= 0.9 )

### AT4G00400



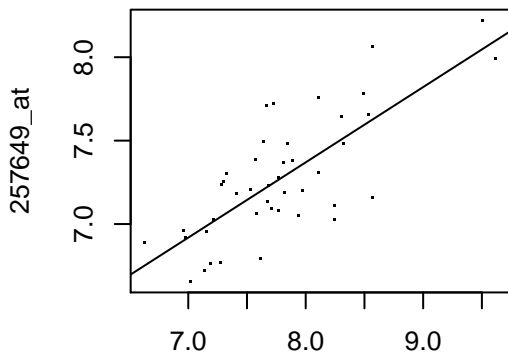
(R2= 0.68 , p= 4.6e-103 , cor.coef= 0.82 )

### AT5G63420



(R2= 0.6 , p= 1.8e-67 , cor.coef= 0.77 )

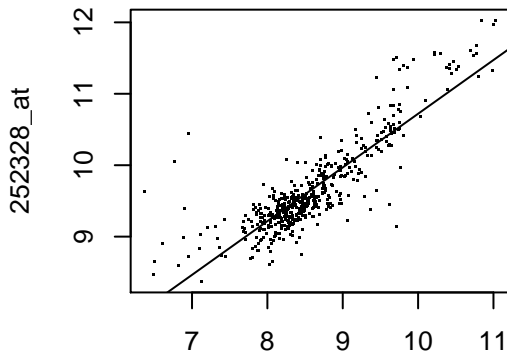
### AT3G16857



256790\_at

(R<sup>2</sup>= 0.57 , p= 4.1e-09 , cor.coef= 0.76)

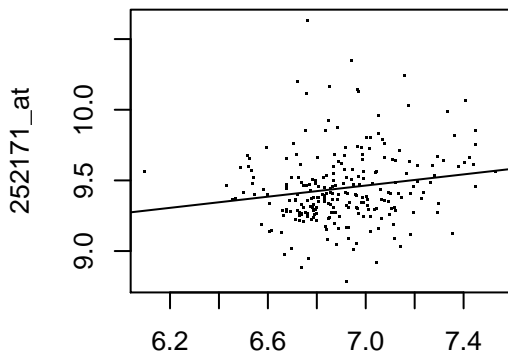
### AT3G48570



252324\_at

(R<sup>2</sup>= 0.75 , p= 2.3e-146 , cor.coef= 0.87)

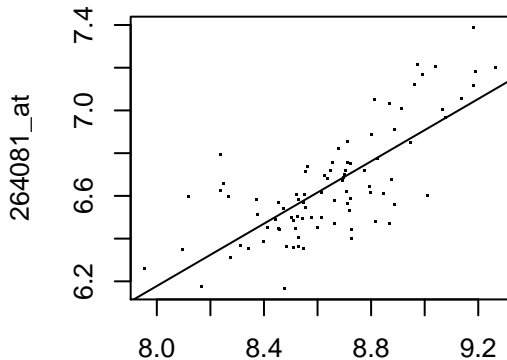
### AT3G50590



252162\_at

(R<sup>2</sup>= 0.028 , p= 0.0089 , cor.coef= 0.17)

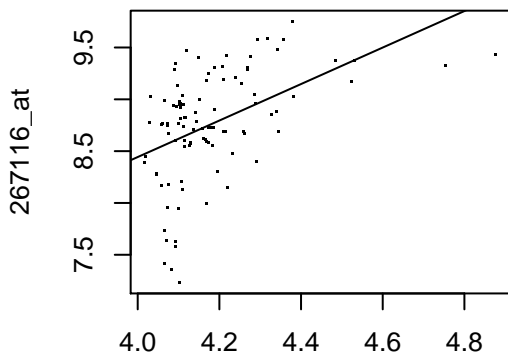
### AT2G28540



264076\_at

(R<sup>2</sup>= 0.57 , p= 1.8e-17 , cor.coef= 0.75)

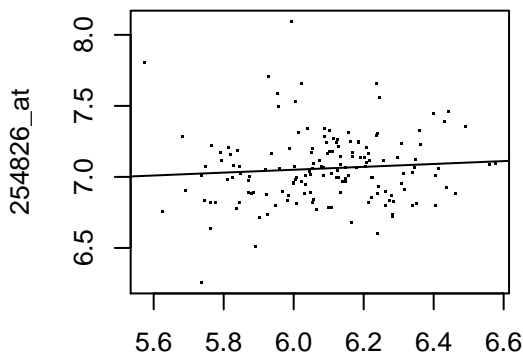
### AT2G32560



267117\_at

(R2= 0.22 , p= 6.6e-07 , cor.coef= 0.47)

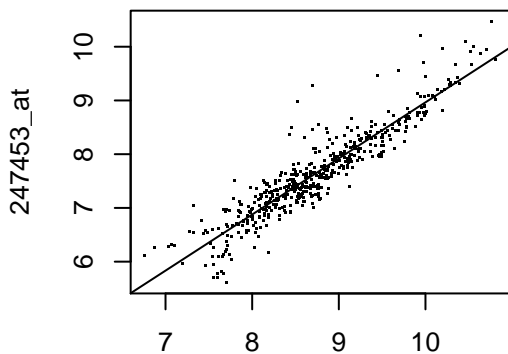
### AT4G12640



254825\_at

(R2= 0.0067 , p= 0.31 , cor.coef= 0.082)

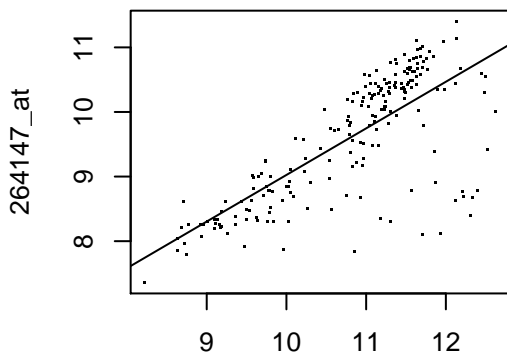
### AT5G62440



247454\_at

(R2= 0.86 , p= 9.1e-206 , cor.coef= 0.93)

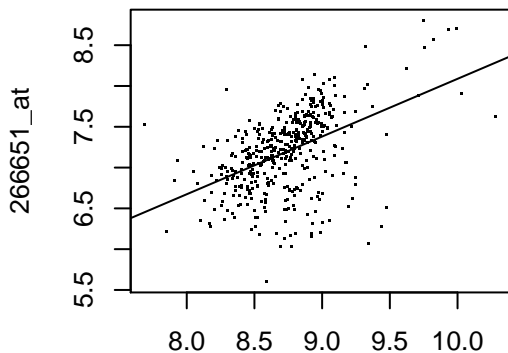
### AT1G02205



264146\_at

(R2= 0.55 , p= 1.8e-37 , cor.coef= 0.74)

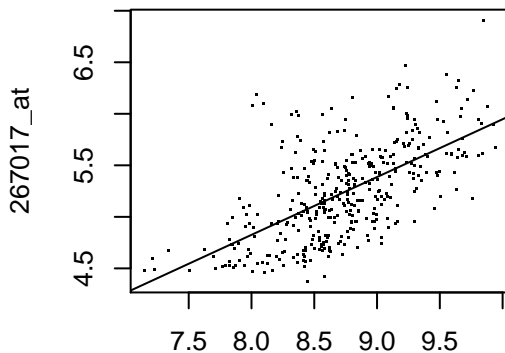
### AT2G25760



266652\_at

(R2= 0.22 , p= 6e-26 , cor.coef= 0.47 )

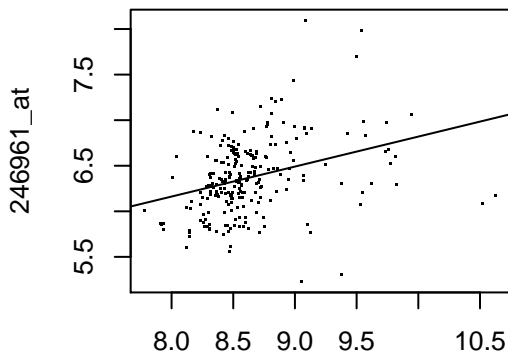
### AT2G39140



267018\_at

(R2= 0.39 , p= 3.3e-42 , cor.coef= 0.62 )

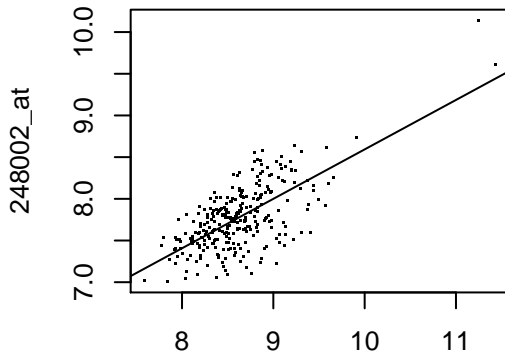
### AT5G24710



246960\_at

(R2= 0.11 , p= 1.5e-07 , cor.coef= 0.33 )

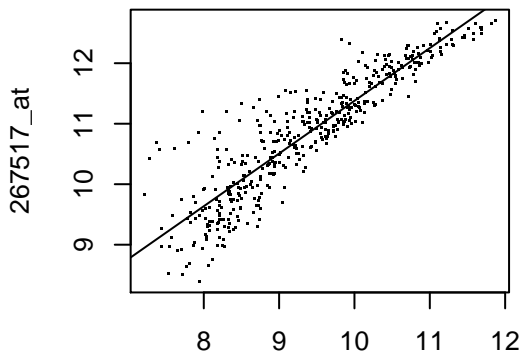
### AT5G56180



247997\_at

(R2= 0.46 , p= 1e-39 , cor.coef= 0.68 )

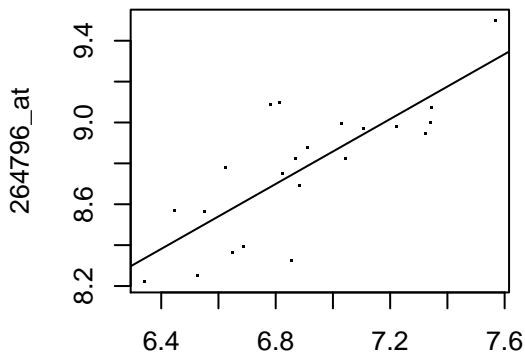
### AT2G30520



267516\_at

(R2= 0.82 , p= 6.5e-165 , cor.coef= 0.9 )

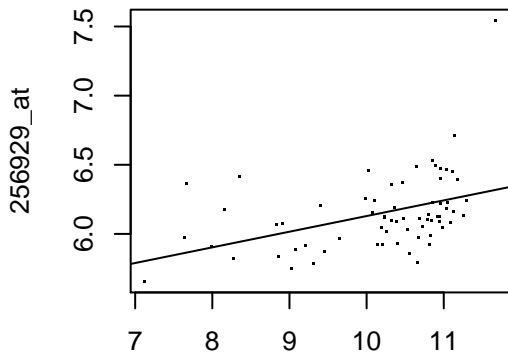
### AT1G08680



264795\_at

(R2= 0.62 , p= 1.4e-05 , cor.coef= 0.79 )

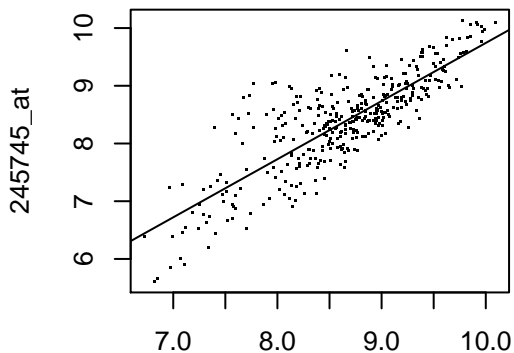
### AT3G22620



256937\_at

(R2= 0.18 , p= 4e-04 , cor.coef= 0.42 )

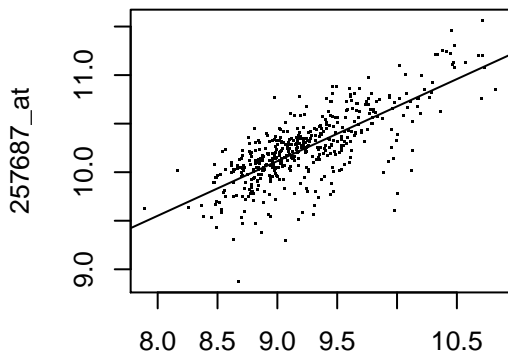
### AT1G51110



245744\_at

(R2= 0.69 , p= 3.4e-98 , cor.coef= 0.83 )

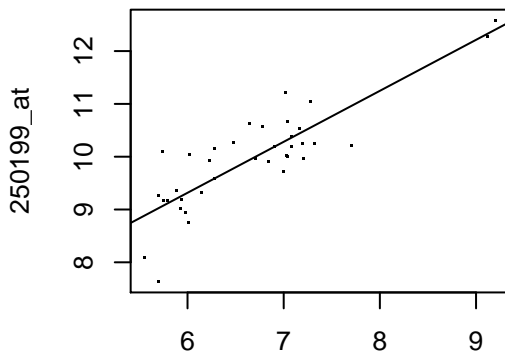
### AT3G12800



257686\_at

(R2= 0.56 , p= 1.1e-85 , cor.coef= 0.75 )

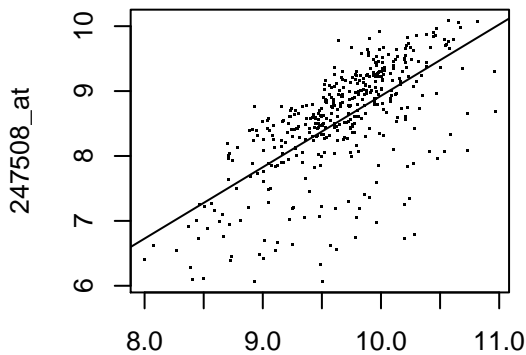
### AT5G14180



250219\_at

(R2= 0.72 , p= 2.5e-11 , cor.coef= 0.85 )

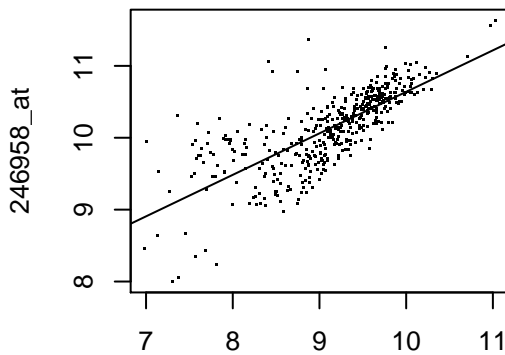
### AT5G62000



247468\_at

(R2= 0.44 , p= 3.3e-55 , cor.coef= 0.67 )

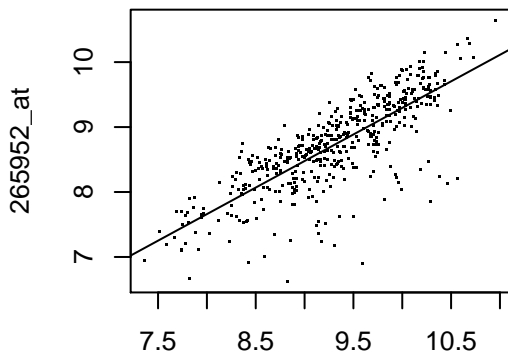
### AT5G24690



246959\_at

(R2= 0.56 , p= 3e-80 , cor.coef= 0.75 )

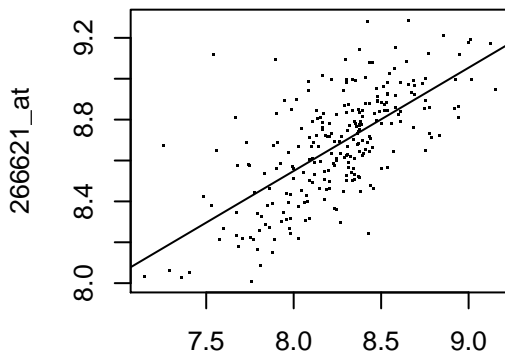
### AT2G37480



265953\_at

(R2= 0.63 , p= 1.5e-104 , cor.coef= 0.79 )

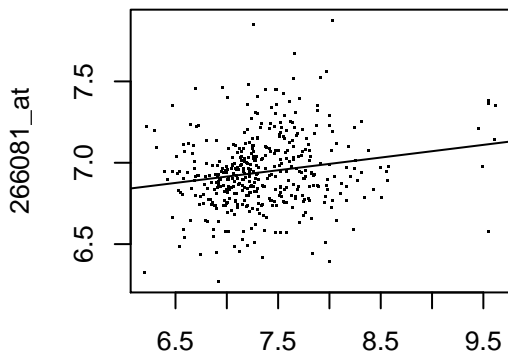
### AT2G35450



266620\_at

(R2= 0.44 , p= 1.5e-33 , cor.coef= 0.67 )

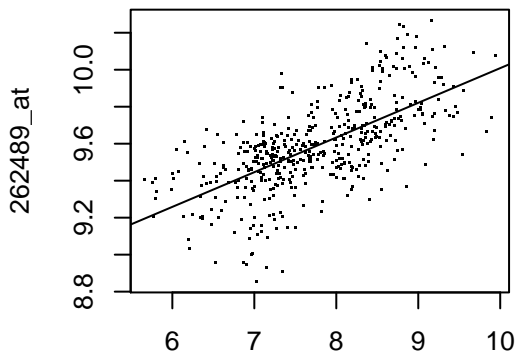
### AT2G37840



266080\_at

(R2= 0.033 , p= 0.00021 , cor.coef= 0.18 )

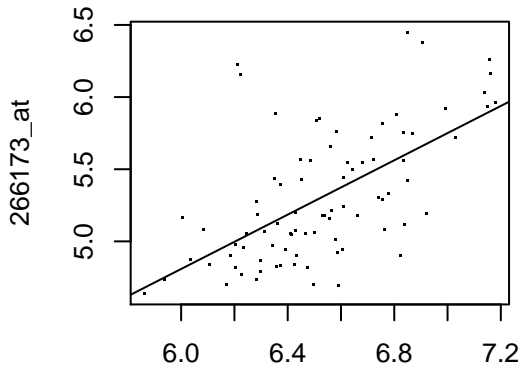
### AT1G21830



262488\_at

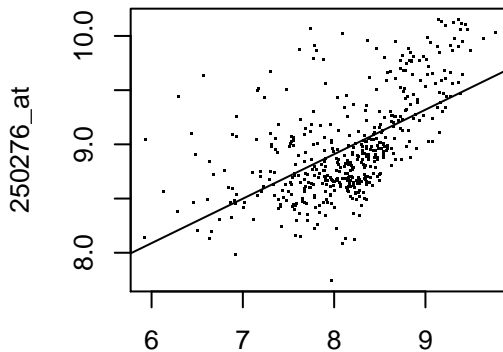
(R2= 0.43 , p= 2.2e-59 , cor.coef= 0.66 )

### AT2G02410



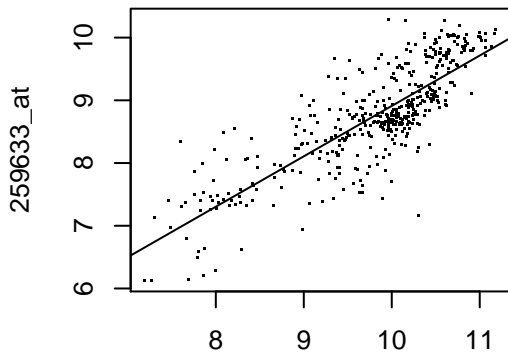
(R2= 0.37 , p= 6.5e-10 , cor.coef= 0.61 )

### AT5G13030



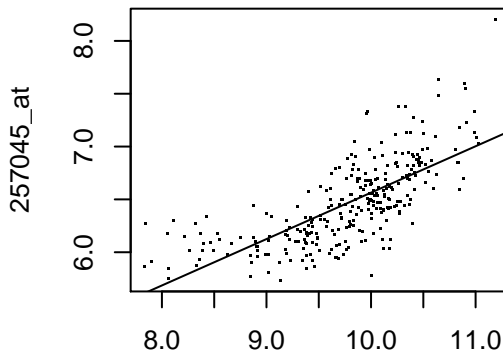
(R2= 0.34 , p= 1.1e-43 , cor.coef= 0.58 )

### AT1G56500



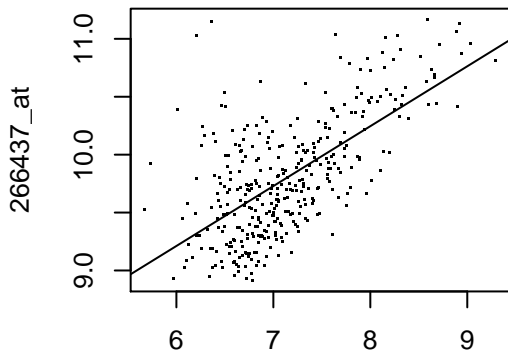
(R2= 0.67 , p= 2e-109 , cor.coef= 0.82 )

### AT3G19720



(R2= 0.51 , p= 1.5e-47 , cor.coef= 0.72 )

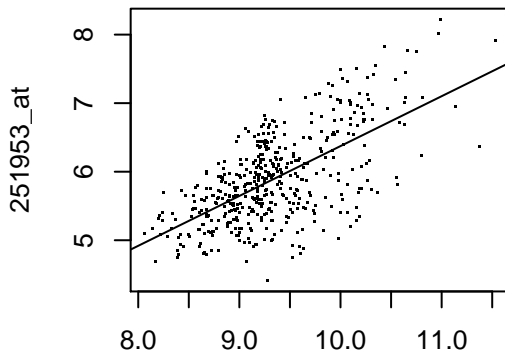
### AT2G43160



266436\_at

(R2= 0.42 , p= 5e-44 , cor.coef= 0.65 )

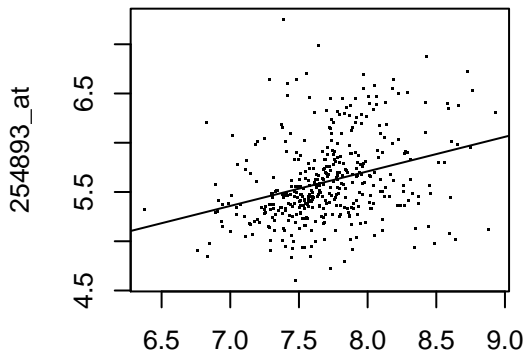
### AT3G53670



251954\_at

(R2= 0.41 , p= 3.2e-54 , cor.coef= 0.64 )

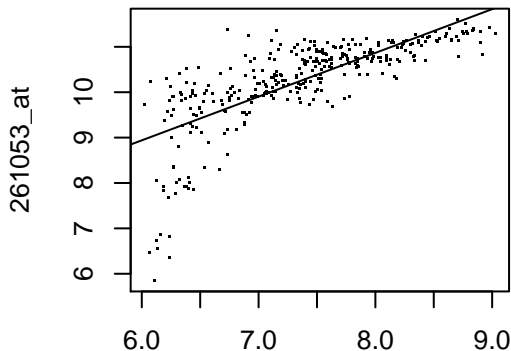
### AT4G11830



254846\_at

(R2= 0.1 , p= 7.9e-11 , cor.coef= 0.32 )

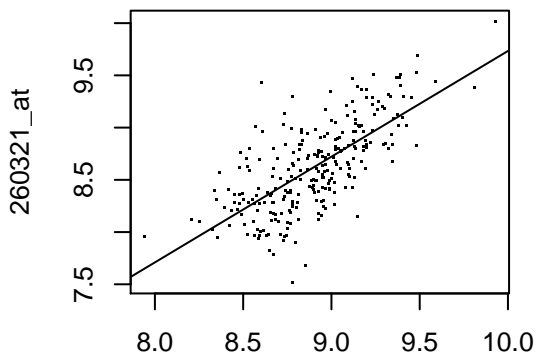
### AT1G01320



261054\_at

(R2= 0.55 , p= 2.2e-59 , cor.coef= 0.74 )

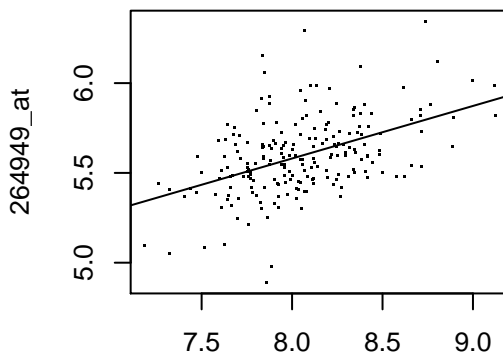
### AT1G63900



260322\_at

(R<sup>2</sup>= 0.49 , p= 1.1e-39 , cor.coef= 0.7 )

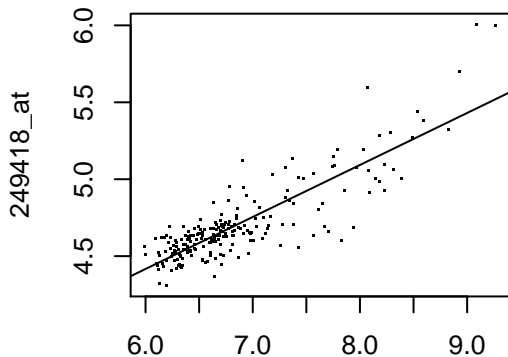
### AT1G77080



264945\_at

(R<sup>2</sup>= 0.22 , p= 1.3e-12 , cor.coef= 0.47 )

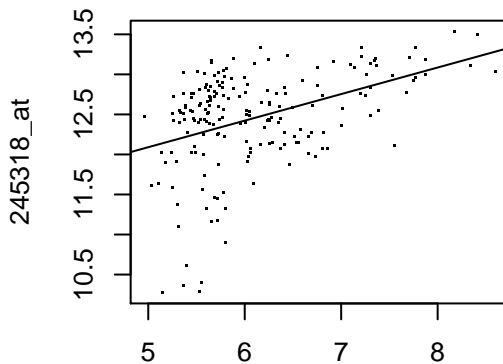
### AT5G39785



249423\_at

(R<sup>2</sup>= 0.72 , p= 1.8e-61 , cor.coef= 0.85 )

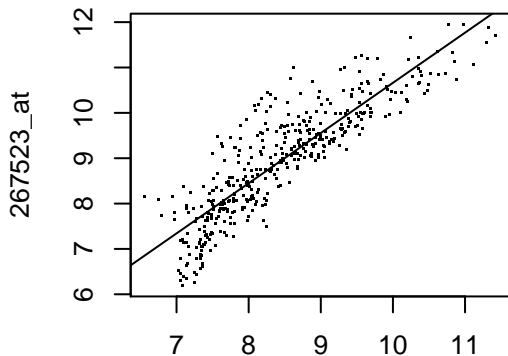
### AT4G16980



245459\_at

(R<sup>2</sup>= 0.17 , p= 2.3e-09 , cor.coef= 0.42 )

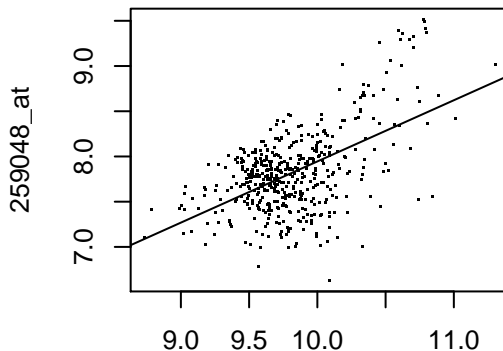
### AT2G30600



267524\_at

(R2= 0.77 , p= 6.7e-134 , cor.coef= 0.88 )

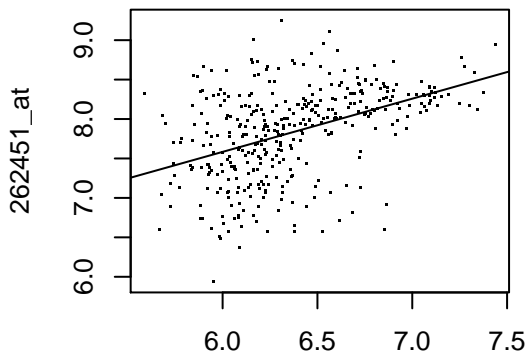
### AT3G03380



259047\_at

(R2= 0.3 , p= 1.8e-37 , cor.coef= 0.55 )

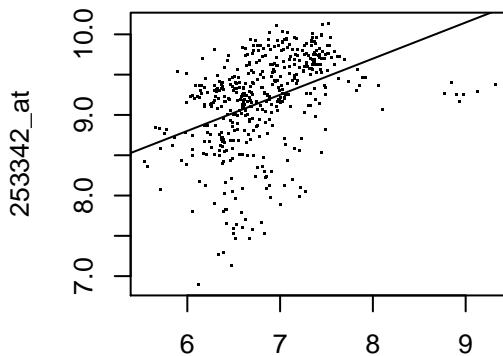
### AT1G11130



262479\_at

(R2= 0.19 , p= 2.5e-19 , cor.coef= 0.44 )

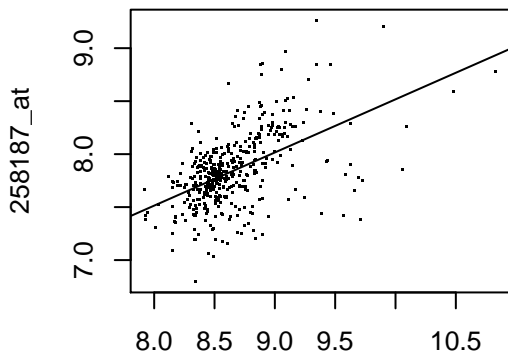
### AT4G33520



253339\_at

(R2= 0.16 , p= 4e-19 , cor.coef= 0.4 )

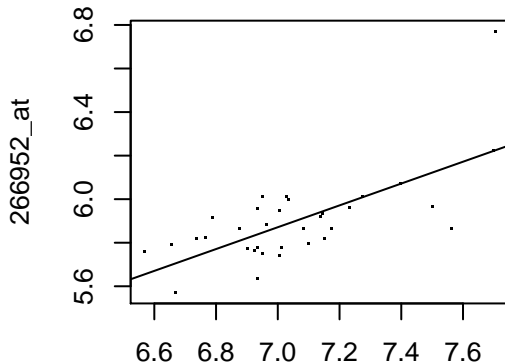
### AT3G17880



258219\_at

(R2= 0.27 , p= 8.6e-30 , cor.coef= 0.52 )

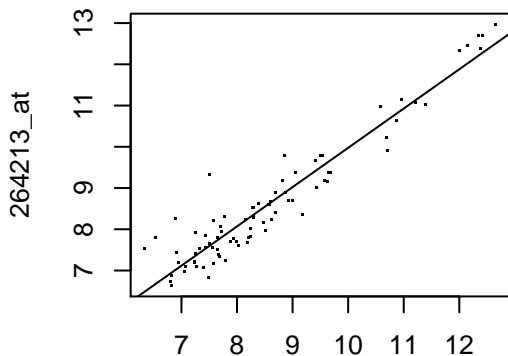
### AT2G34555



266907\_at

(R2= 0.47 , p= 9.7e-06 , cor.coef= 0.69 )

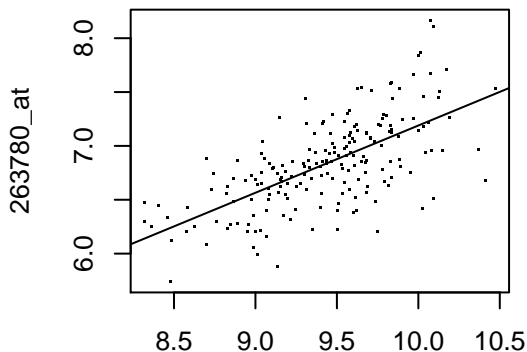
### AT1G65390



264153\_at

(R2= 0.91 , p= 3.5e-44 , cor.coef= 0.95 )

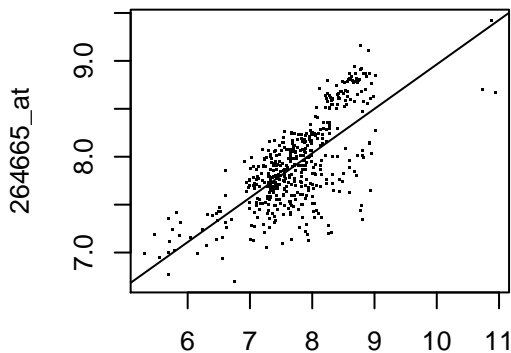
### AT2G46340



263779\_at

(R2= 0.43 , p= 1.2e-25 , cor.coef= 0.65 )

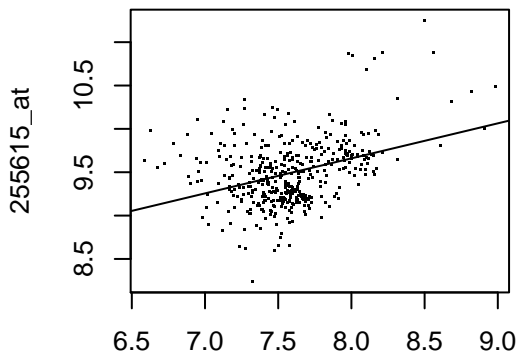
### AT1G09660



264664\_at

(R2= 0.5 , p= 3.7e-72 , cor.coef= 0.71 )

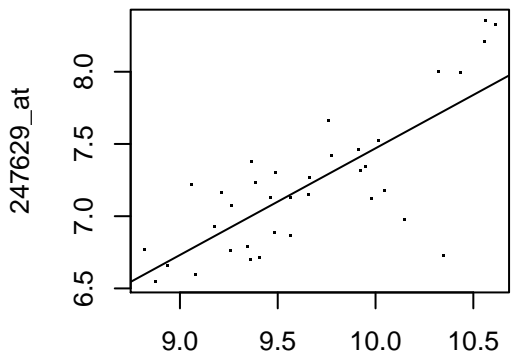
### AT4G01290



255616\_at

(R2= 0.13 , p= 4.1e-14 , cor.coef= 0.36 )

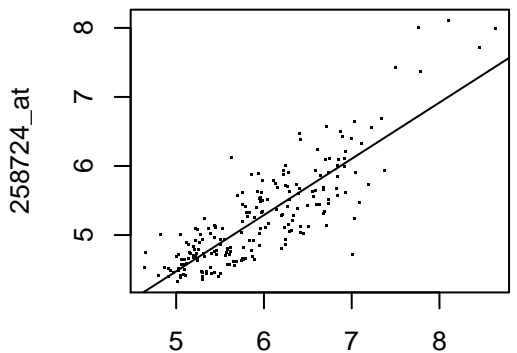
### AT5G60410



247630\_at

(R2= 0.59 , p= 5.4e-08 , cor.coef= 0.77 )

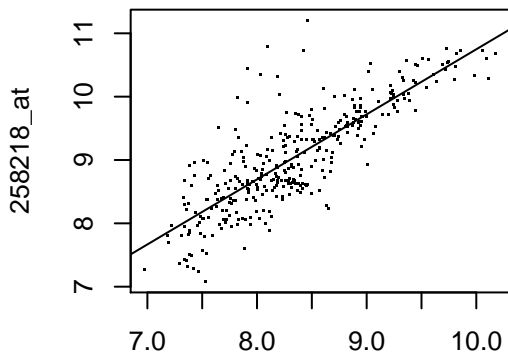
### AT3G09600



258723\_at

(R2= 0.71 , p= 2.9e-58 , cor.coef= 0.84 )

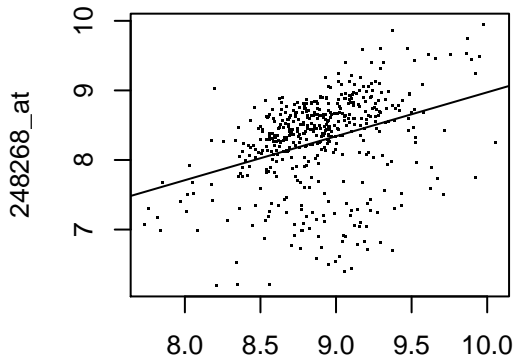
### AT3G18000



258217\_at

(R2= 0.68 , p= 1.7e-87 , cor.coef= 0.82 )

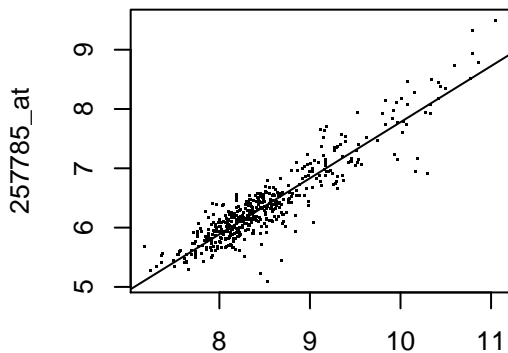
### AT5G53480



248272\_at

(R2= 0.12 , p= 1.7e-14 , cor.coef= 0.34 )

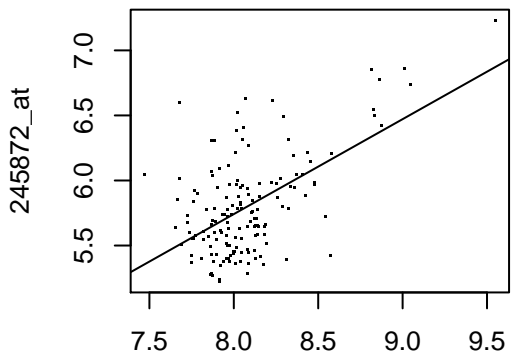
### AT3G26980



257784\_at

(R2= 0.85 , p= 2.5e-196 , cor.coef= 0.92 )

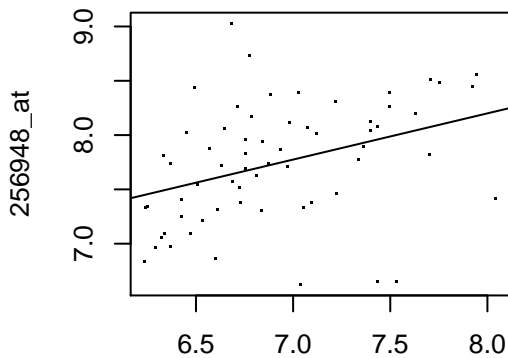
### AT1G26300



245870\_at

(R2= 0.32 , p= 3.9e-14 , cor.coef= 0.56 )

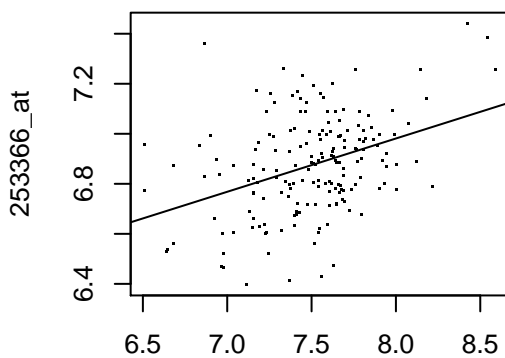
### AT3G18930



256917\_at

(R2= 0.14 , p= 0.0029 , cor.coef= 0.37 )

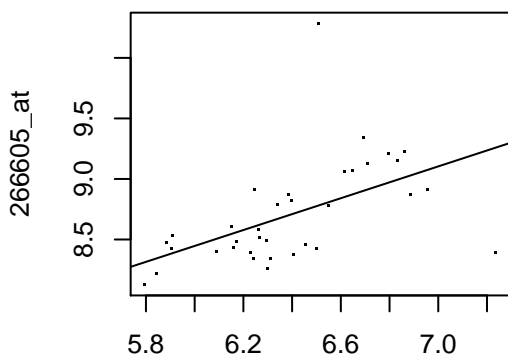
### AT4G33180



253367\_at

(R2= 0.14 , p= 1.6e-07 , cor.coef= 0.38 )

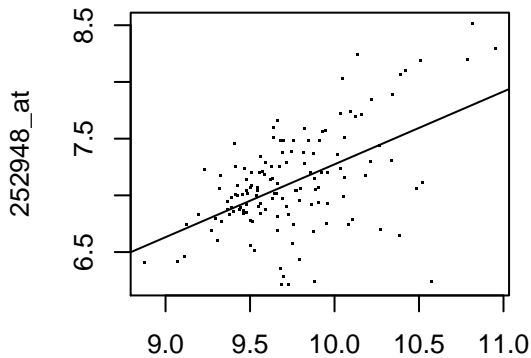
### AT2G46020



266909\_at

(R2= 0.28 , p= 0.0012 , cor.coef= 0.53 )

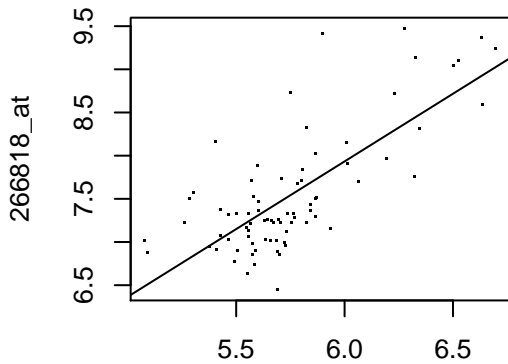
### AT4G38600



252947\_at

(R2= 0.28 , p= 2.2e-11 , cor.coef= 0.53 )

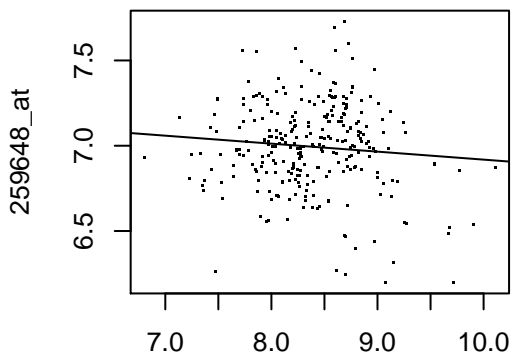
### AT2G44950



266817\_at

(R2= 0.55 , p= 7.1e-15 , cor.coef= 0.74 )

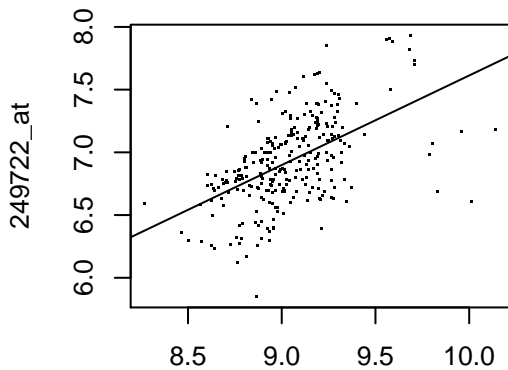
### AT1G55310



259666\_at

(R2= 0.0084 , p= 0.12 , cor.coef= -0.092 )

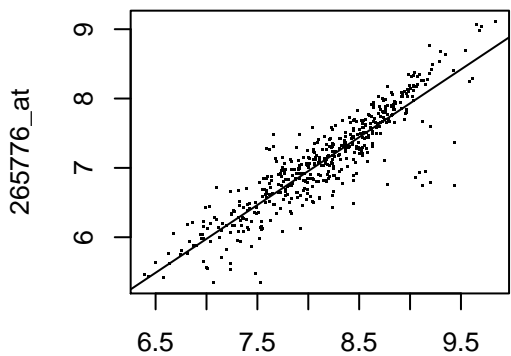
### AT5G35430



249723\_at

(R2= 0.28 , p= 2e-21 , cor.coef= 0.53 )

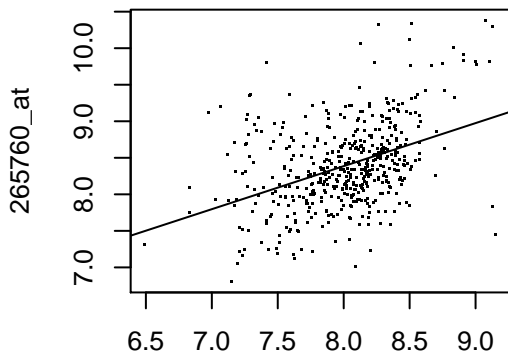
### AT2G07340



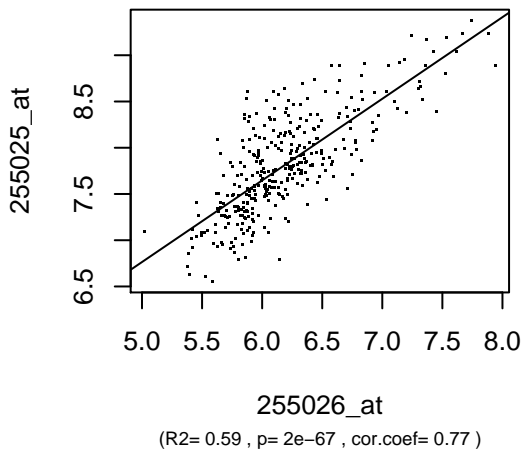
265777\_at

(R2= 0.81 , p= 3.9e-174 , cor.coef= 0.9 )

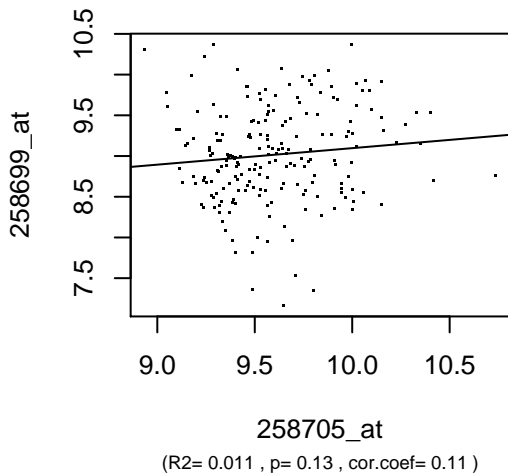
### AT2G01220



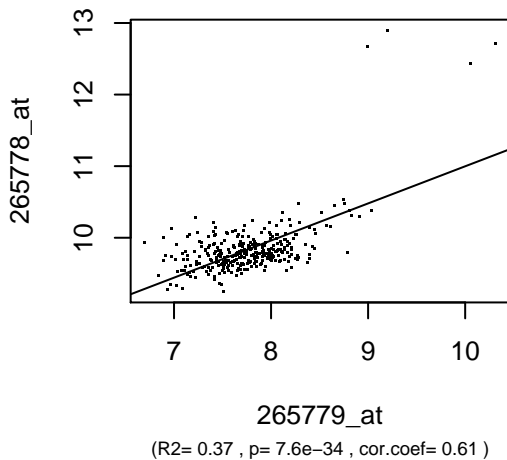
### AT4G09900



### AT3G09470

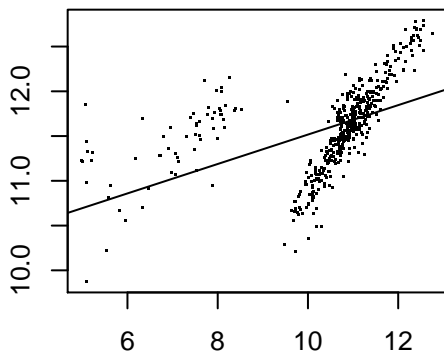


### AT2G07360



AFX-Athal-Ubq\_5\_f\_at

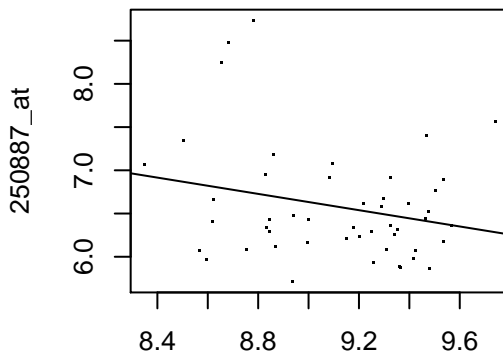
**AT4G05050**



255257\_at

(R2= 0.26 , p= 1.3e-32 , cor.coef= 0.51 )

**AT5G04440**

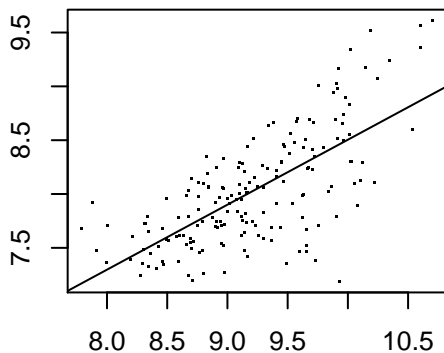


250886\_at

(R2= 0.06 , p= 0.09 , cor.coef= -0.24 )

**AT1G10090**

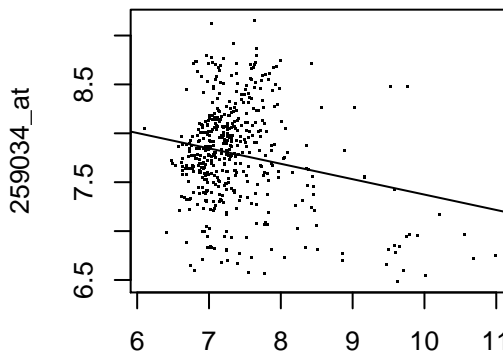
264516\_at



264515\_at

(R2= 0.48 , p= 2.3e-27 , cor.coef= 0.69 )

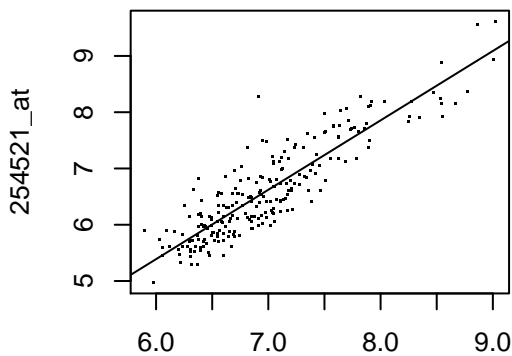
**AT3G09410**



259033\_at

(R2= 0.043 , p= 4.7e-06 , cor.coef= -0.21 )

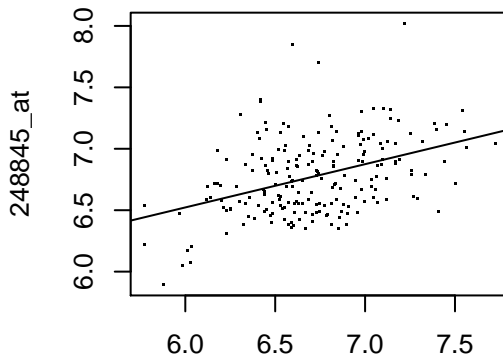
### AT5G44820



249021\_at

(R2= 0.79 , p= 5.3e-81 , cor.coef= 0.89)

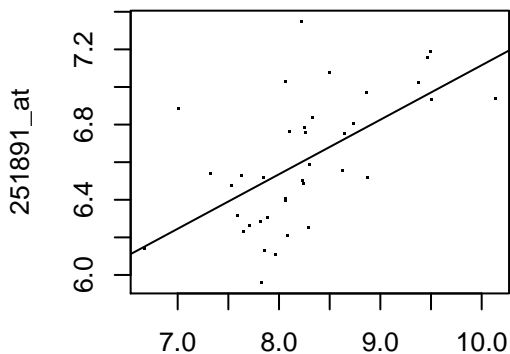
### AT5G46470



248875\_at

(R2= 0.17 , p= 1.1e-09 , cor.coef= 0.41)

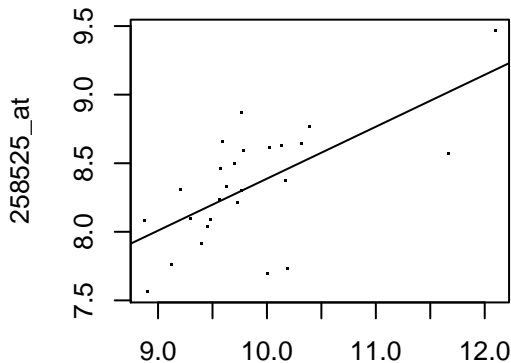
### AT3G54320



251892\_at

(R2= 0.35 , p= 8.8e-05 , cor.coef= 0.59)

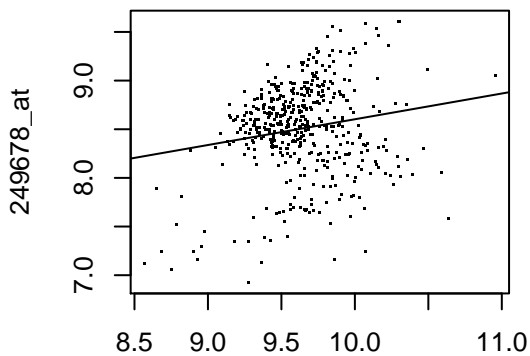
### AT3G06810



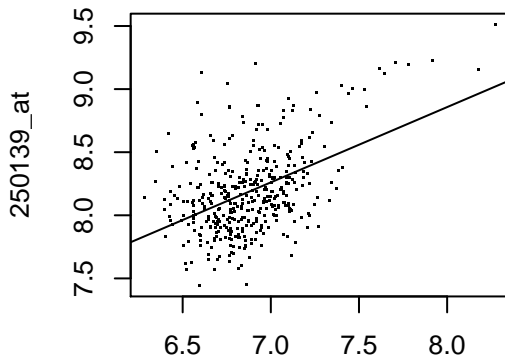
258524\_at

(R2= 0.42 , p= 0.00032 , cor.coef= 0.65)

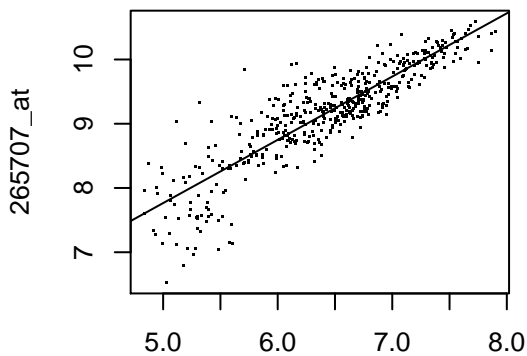
### AT5G35980



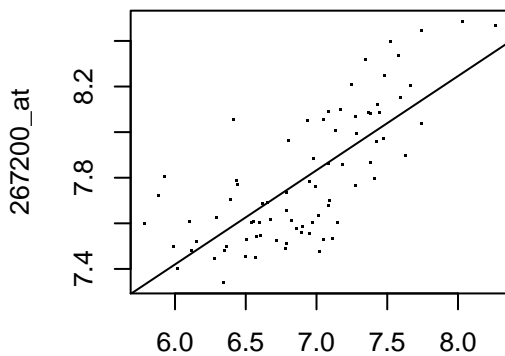
### AT5G14620



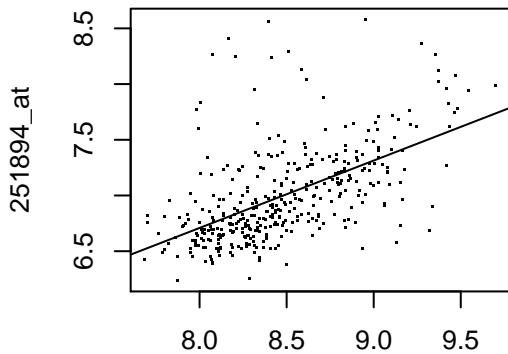
### AT2G03390



### AT2G31010



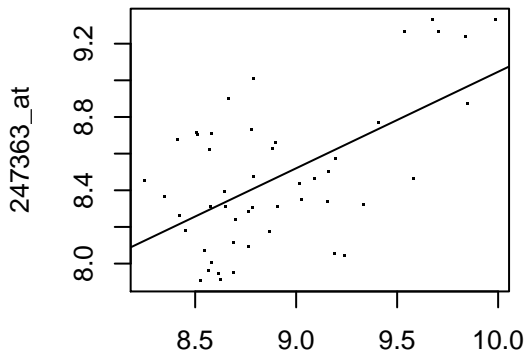
### AT3G54380



251893\_at

(R2= 0.32 , p= 1.3e-32 , cor.coef= 0.56)

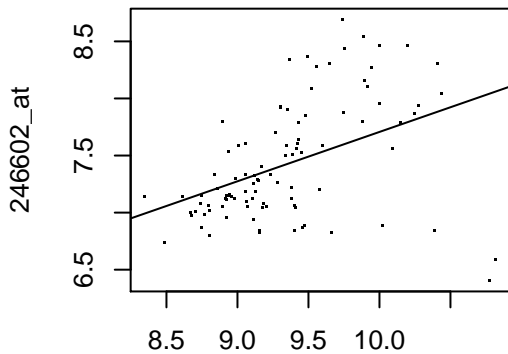
### AT5G63200



247364\_at

(R2= 0.34 , p= 1.1e-05 , cor.coef= 0.58)

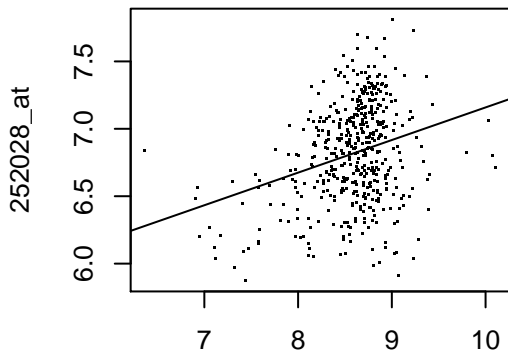
### AT1G31710



246601\_at

(R2= 0.19 , p= 8.6e-06 , cor.coef= 0.43)

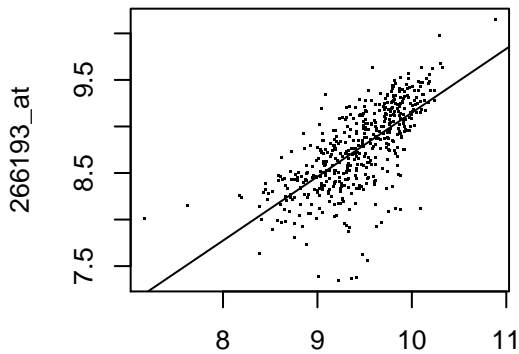
### AT3G52640



252062\_at

(R2= 0.08 , p= 3.7e-10 , cor.coef= 0.28)

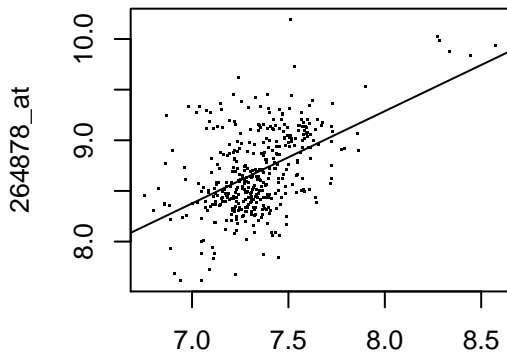
### AT2G39080



266192\_at

(R2= 0.48 , p= 4.4e-70 , cor.coef= 0.69 )

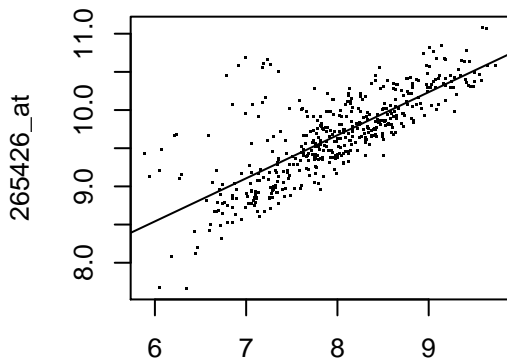
### AT2G17410



264876\_at

(R2= 0.25 , p= 1.3e-26 , cor.coef= 0.5 )

### AT2G20740



265427\_at

(R2= 0.6 , p= 2.3e-95 , cor.coef= 0.77 )